

FD100

RIDE ON FLOOR SCRUBBER

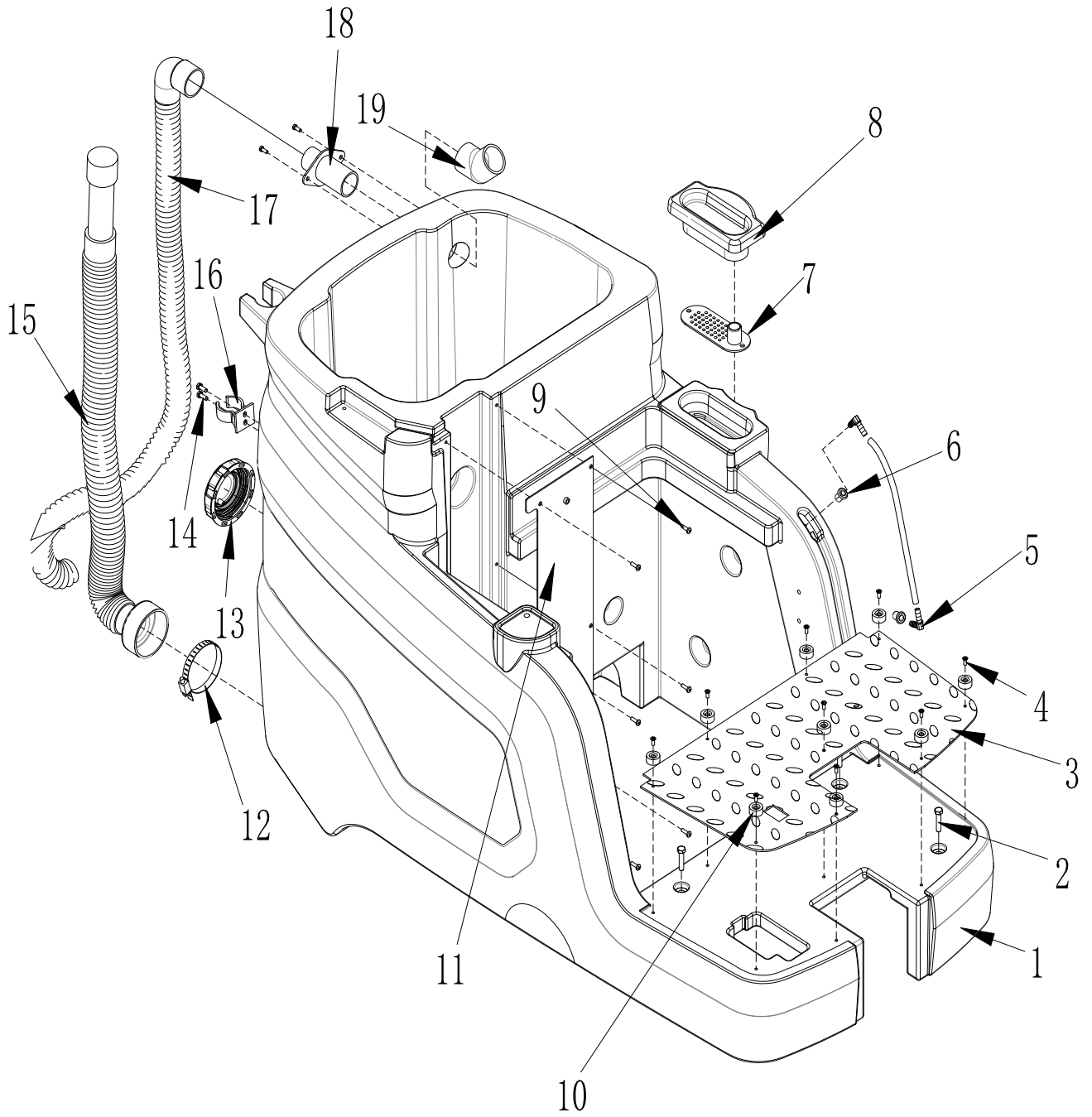
PARTS MANUAL

Made In China

TABLE OF CONTENTS

TANK GROUP.....	3-4	MAGNETIC BRUSH.....	25-26
VACUUM MOTOR GROUP.....	5-6	BRUSH LIFT GROUP.....	27-28
CONTROL PANEL GROUP.....	7-8	LEFT AND RIGHT WATER FENDER GROUP	29-32
SEAT GROUP.....	9-10	SQUEEGEE PULL ROD GROUP.....	33-34
ELECTRIC CONTROLGROUP.....	11-12	SQUEEGEE LIFT GROUP.....	35-36
FRONT WHEEL STEERING ASSEMBLY.....	13-14	SQUEEGEE ASSEMBLY.....	37-38
FRONT WHEEL GROUP.....	15-18	ACCELERATOR GROUP.....	39-40
REAR WHEEL GROUP.....	19-22	FILTER ASSEMBLY	41-42
MAGNETIC BRUSH SYSTEM.....	23-24	BATTERY GROUP.....	43-46

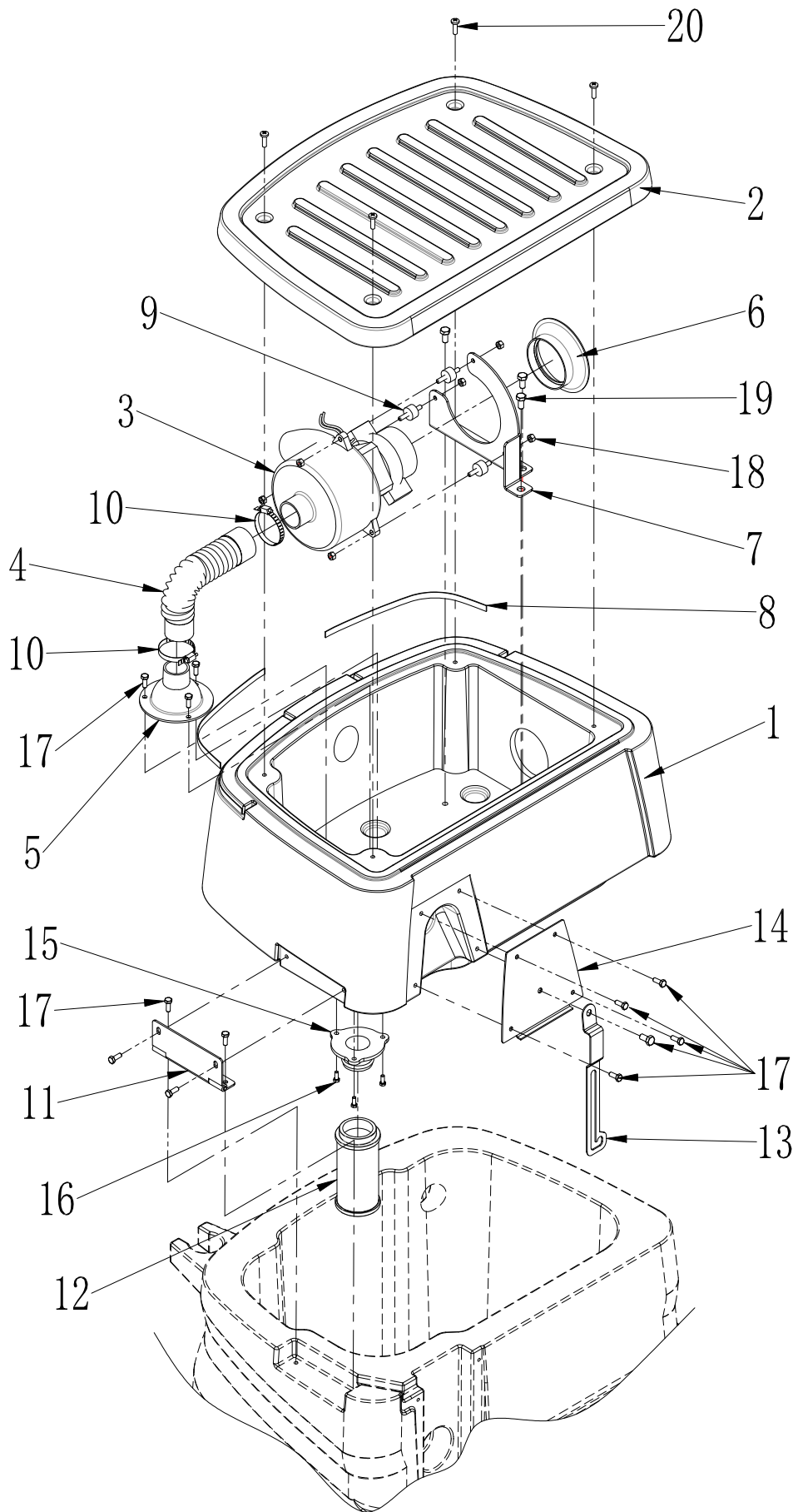
TANK GROUP



TANK GROUP

REF	PART	DESCRIPTION	NO
1	FD1001701	Water tank	1
2	933#	M8*40 Hex screw	6
3	FD1001905	Foot pad	1
4	819#	M4*12	9
5	FD1301716	7 sharp contact	2
6	FD1301904	Gasket, water level pipe	1
7	270014P	clean water tank inlet screen	1
8	270015P	Clean water tank inlet cover	1
9	818#	M5*16 Cross head screw	6
10	670019	Gasket,plastic head screw	6
11	FD1001652	Air plate	1
12		抱箍	1
13	FD1301722	Clean water tank outlet cover	1
14	5789#	M6*12 Hex screw	4
15	FD1001707	Drian pipe	1
16	670016	Pipe clamp	1
17	FD1001708	Suction pipe	1
18	FD1301718	Inlet water connector	1
19	370006	Pipe elbow	1
20	280002P	Water switch	2

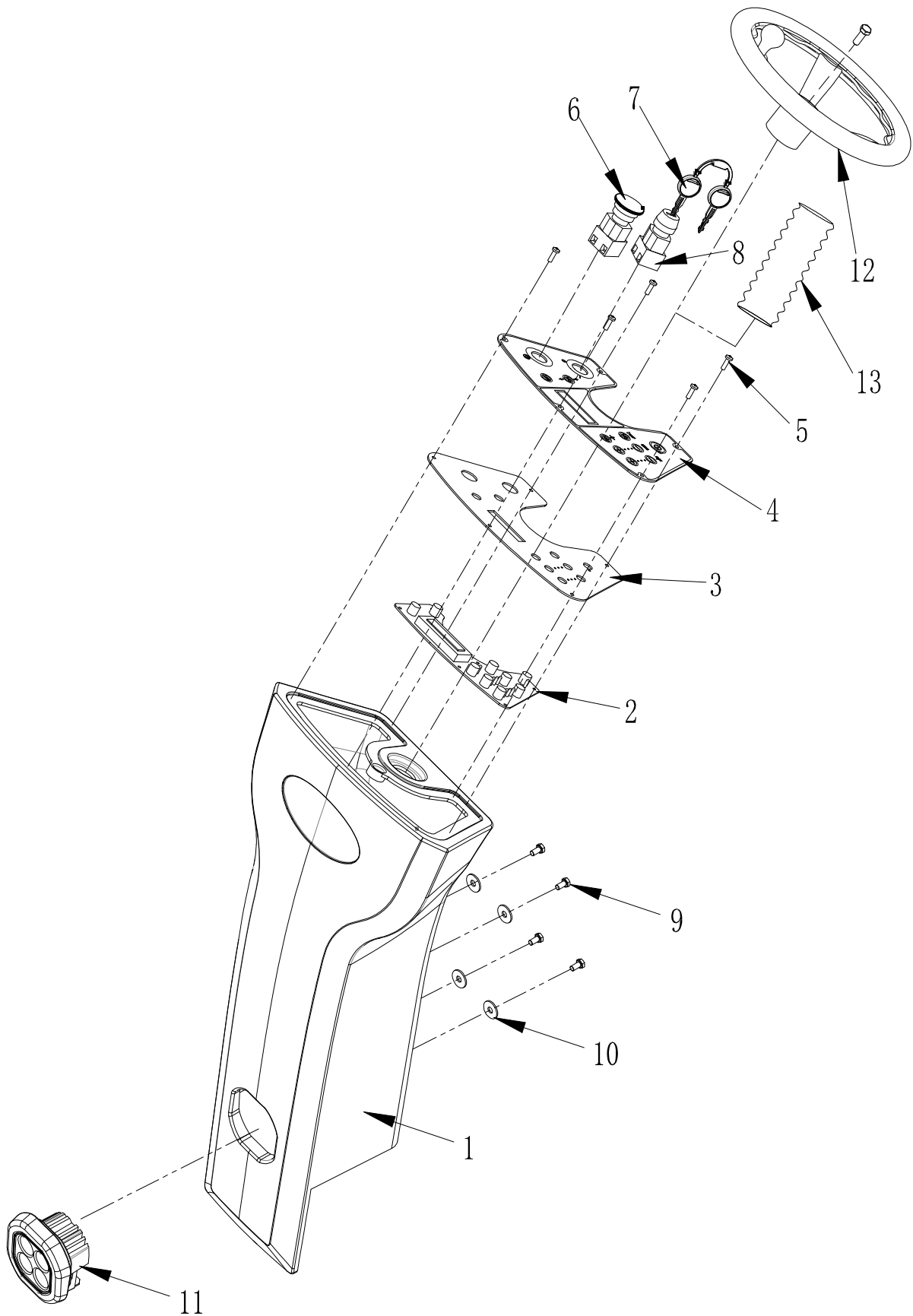
VACUUM MOTOR GROUP



VACUUM MOTOR GROUP

REF	PART	DESCRIPTION	NO
1	FD1001702	Suction motor installation box	1
2	FD1001703	Suction motor installation cover	1
3	ZF130	Suction motor	1
4	FD1301720	Connect hose	1
5	FD1301717	Pipe connector	1
6	FD1301901	Air connector	1
7	FD1001653	Support vacuum motor	1
8	FD1001804	Light strip	2
9	Z30204	马达减振垫	3
10		抱箍	2
11	FD1001656	Hinge	1
12	170008	Float filter screen	1
13	FD1001652	Tank cover fastener	1
14	FD1001654	Air outlet cover plate	1
15	FD1001712	Float ball joint	1
16	818#	M5*16 Cross head screw	3
17	5789#	M6*16 Out hex screw	5
18	985#	M6 Stainless steel locknut	3
19	5789#	M6*16 Outer hex screw	1
20	818#	M6*30Cross head screw	4

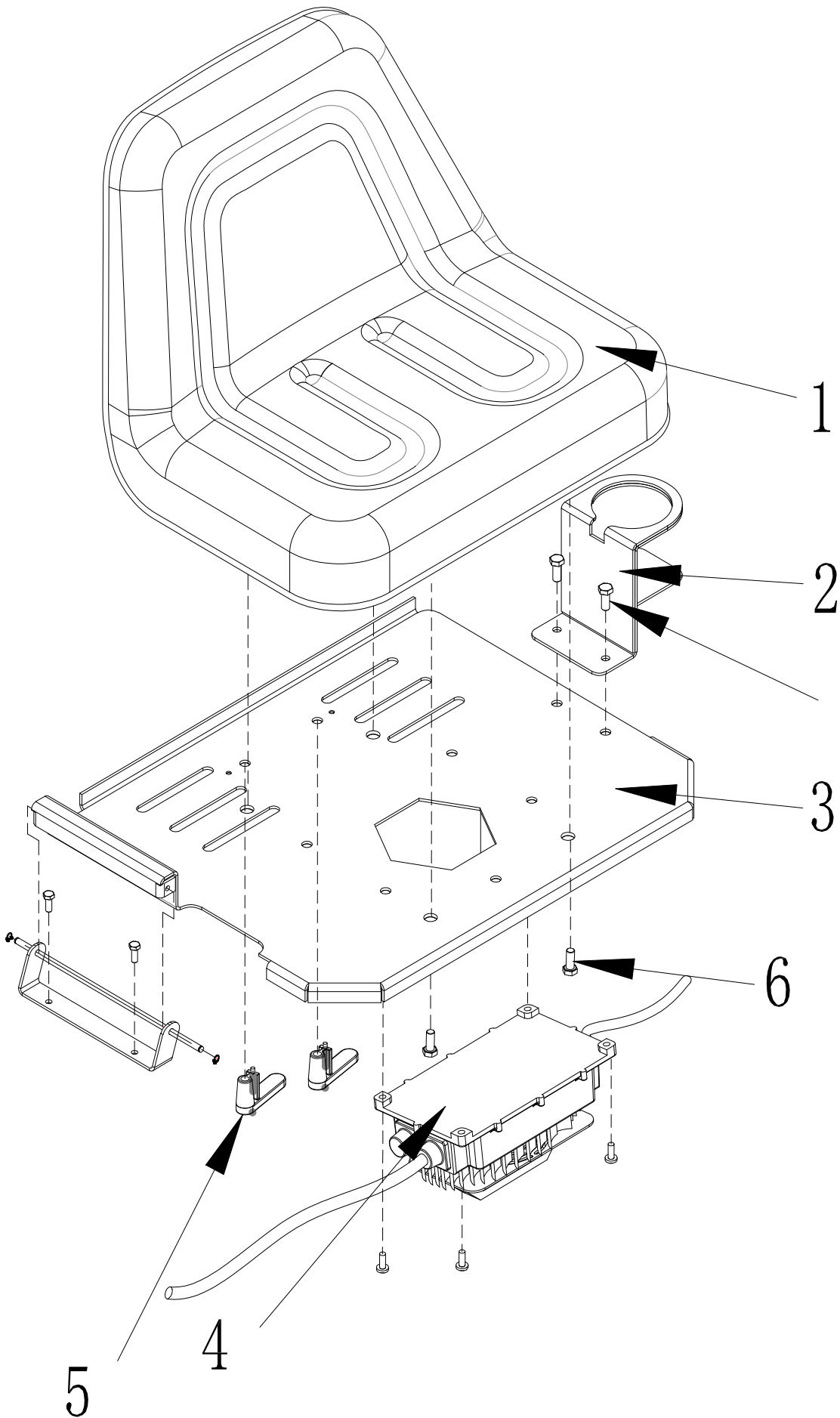
CONTROL PANEL GROUP



CONTROL PANEL GROUP

REF	PART	DESCRIPTION	NO
1	FD1001704	CONTROL PLATE	1
2	FD1001805	Plate	1
3	FD1001655	Panel plate	1
4	TB0100	Panel sticker	1
5	818#	M4*12 Crose head screw	5
6	FD1301803	Emergency stop switch	1
7	FD1301804	Key	1
8	FD1301801	Lock	1
9	933#	M8*30 hex screw	4
10		Φ22*Φ8.5*2.0-M8 Gasket	4
11	FD1001807	Head lamp	1
	FD1001906	Rubber sleeve	1
12	790001	Steering wheel	1
13	770008	Steering wheel protect	1

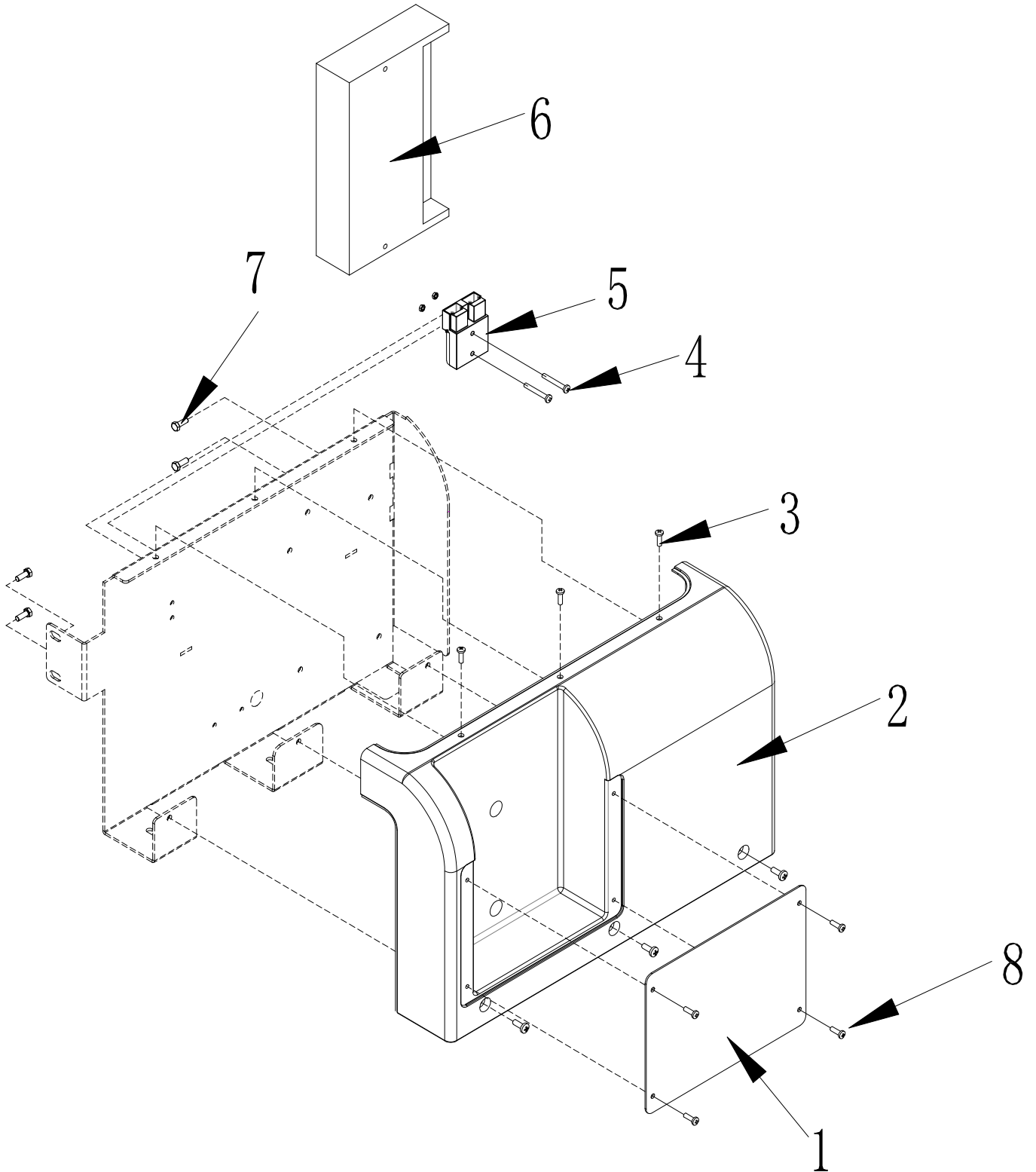
SEAT GROUP



SEAT GROUP

REF	PART	DESCRIPTION	NO
1	FD1301903	Seat	1
2	FD1001648	Cup bracket	1
3	FD1001626	Seat metal	1
	580008	Charger	
5	电源线挂钩	570040	2
	933#	M8*30 Hex screw	4
6	93#	M8 Spring gasket	4
		Φ25*Φ8.5*2.5-M8 Gasket	4

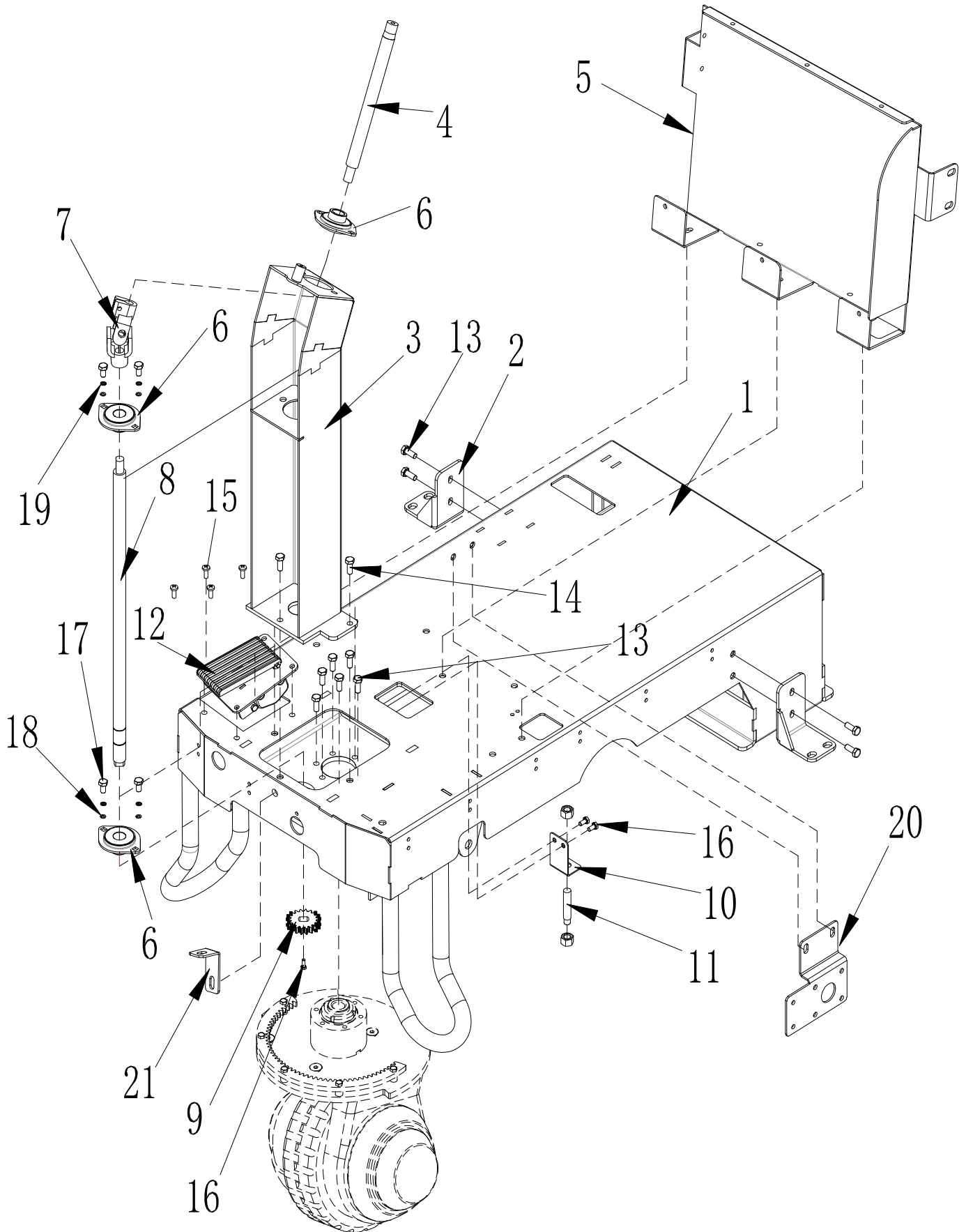
ELECTRIC CONTROL GROUP



Electric control group

REF	PART	DESCRIPTION	NO
1	FD1001657	Storage box cover	1
2	FD1001705	Control box	1
3	818#	M5*16corss head screw	6
	818#	M3*40 Cross head screw	2
4	93#	M3 Spring gasket	2
	97#	M3 Gasket	4
	985#	M3 Lock nut	2
5	180030 (灰)	50A Charger plug	1
6	FD1001806	Controller	1
7	5789#	M6*12 Outer hex screw	4
8	818#	M5*16 cross head screw	4

FRONT WHEEL STEERING ASSEMBLY

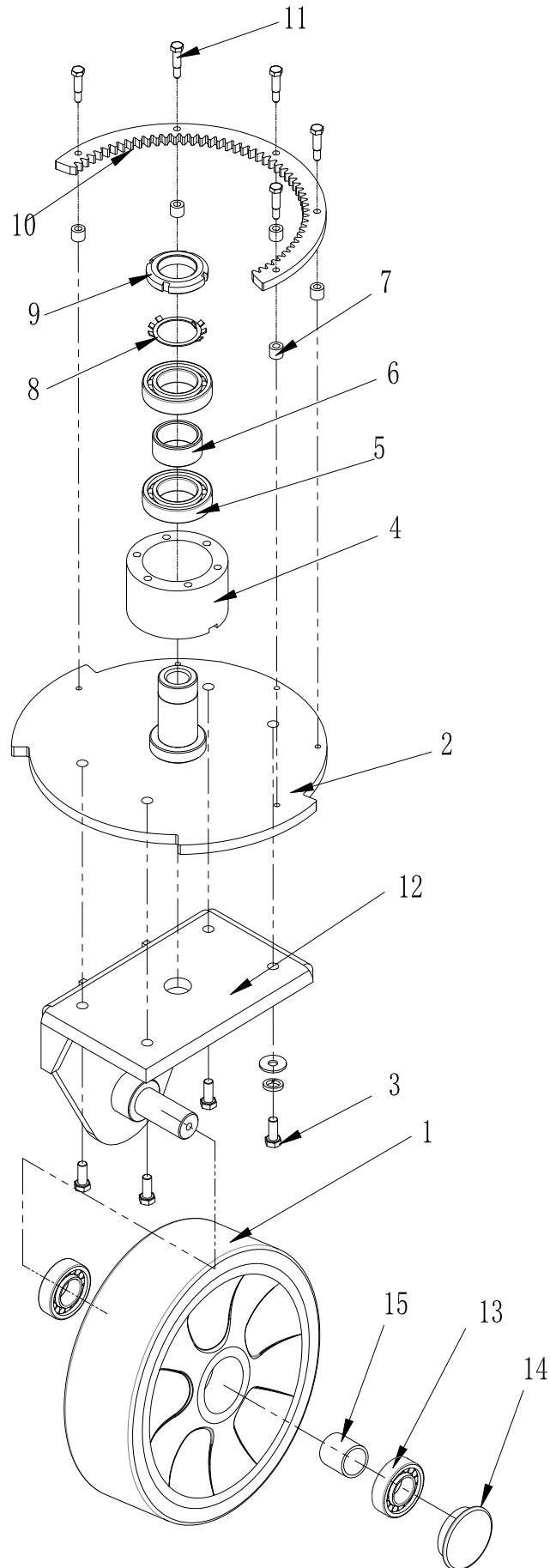


FRONT WHEEL STEERING ASSEMBLY

REF	PART	DESCRIPTION	NO
1	FD1001623	Frame	1
2	FD1001659	Tank plate	2
3	FD1001619	方向立柱	1
4	FD1301661	Steering wheel control shaft	1
5	FD1001620	Controller plate	1
6	760032	调心轴承防护板	6
	790043	Bearing	3
7	790007	universal joint fork	1
8	FD1001614	Steering wheel axle	1
9	760006	Pinion	1
10	FD1001661	Support switch	1
11	780007	Proximity sensor	1
12	780008WZ	Pedal	1
13	5789#	M8*20 Hex screw	11
14	933#	M8*25 Hex screw	3
15	818#	M5*16 Cross head screw	3
16	5789#	M6*12 Hex screw	3
17	933#	M8*16 Hex screw	6
18	97#	M8 Gasket	6
19	93#	M8 Spring gasket	6
20	FD1001660	Filter plate	1
21	FD1001662	Light plate	1

1.

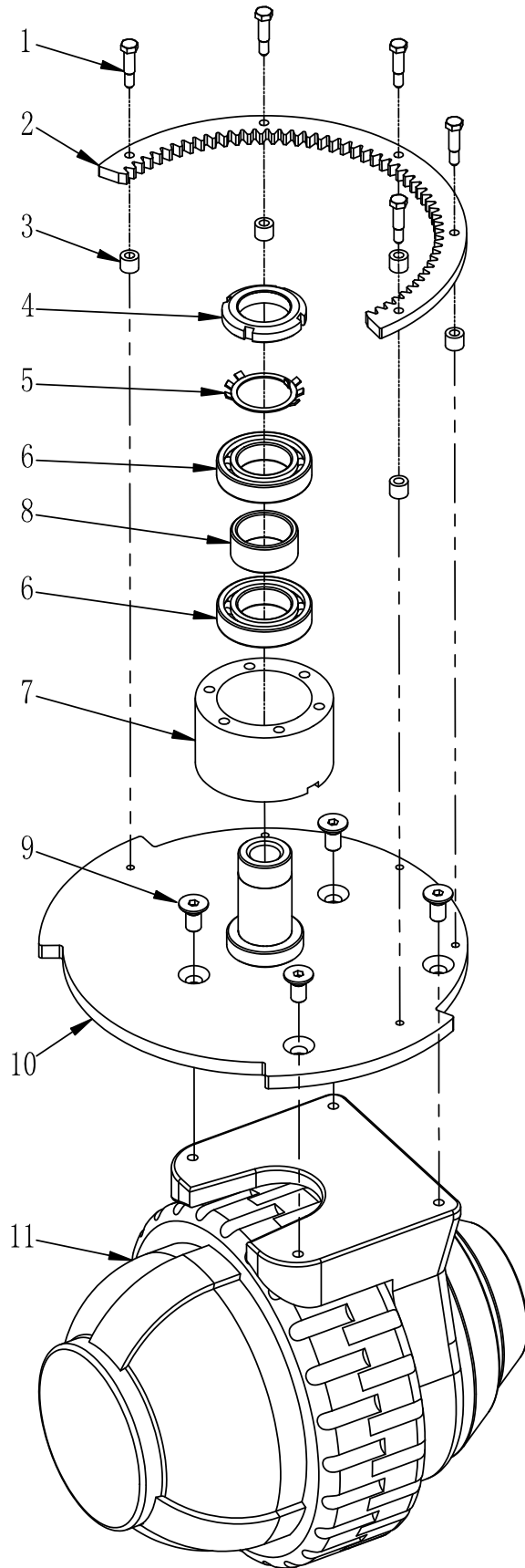
FRONT WHEEL GROUP



FRONT WHEEL GROUP

REF	PART	DESCRIPTION	NO
1	FD1001901	Front wheel	1
2	FD1001604	Front wheel plate M10x20 Hex screw	1
3	933#	(Gasket,spring gasket)	4
4	760007	Drive motor large shaft sleeve	2
5	112	6007	2
6	760008	Small shaft sleeve	1
7	790060	Sleeve , 12mm×8mm× 8.4mm	5
8	790071	Spring	1
9	790072	Nut	1
10	760005	转向大齿条	1
11	933#	M6×25 Hex screw	5
12	FD1001630	Front wheel bracket	1
13	111	6205 Axle	2
14	770006	Wheel waterproof cover	1
15	FD1001608	Front wheel axle sleeve	1

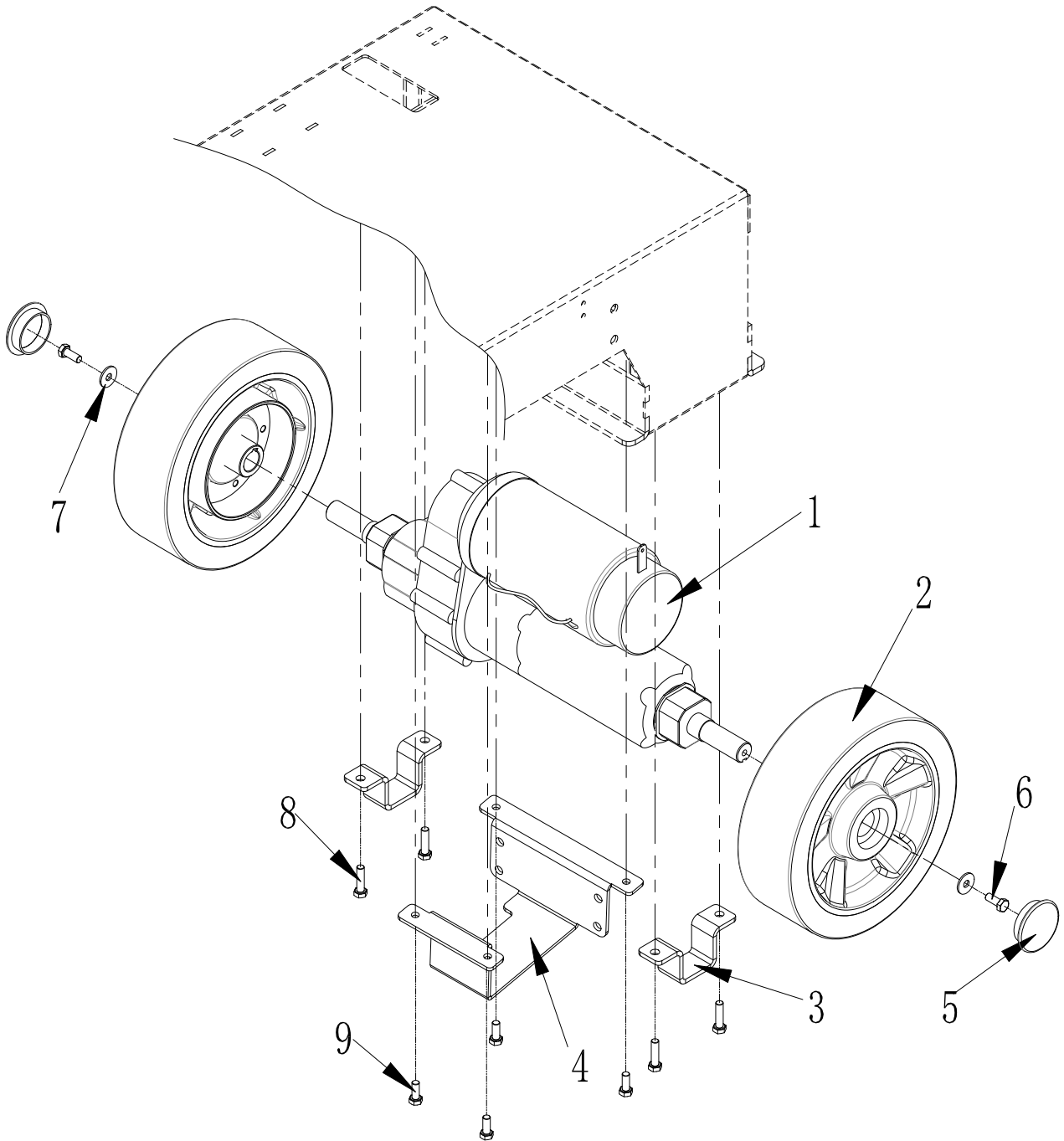
Front wheel group



Front wheel group

REF	PART	DESCRIPTION	NO
1	933	M6×25 Hex screw	5
2	760005	转向大齿条	1
3	790060	衬套, 12mm×8mm×8.4mm	5
4	790072	Nut	1
5	790071	spring	1
6	112	6007	2
7	760007	Axle sleeve ,drive motor	1
8	760008	Fix, axle sleeve	1
9	7991	M10 screw	4
10	FD1001625	Fix,front wheel	1
11	FD1001803	Drive motor	1

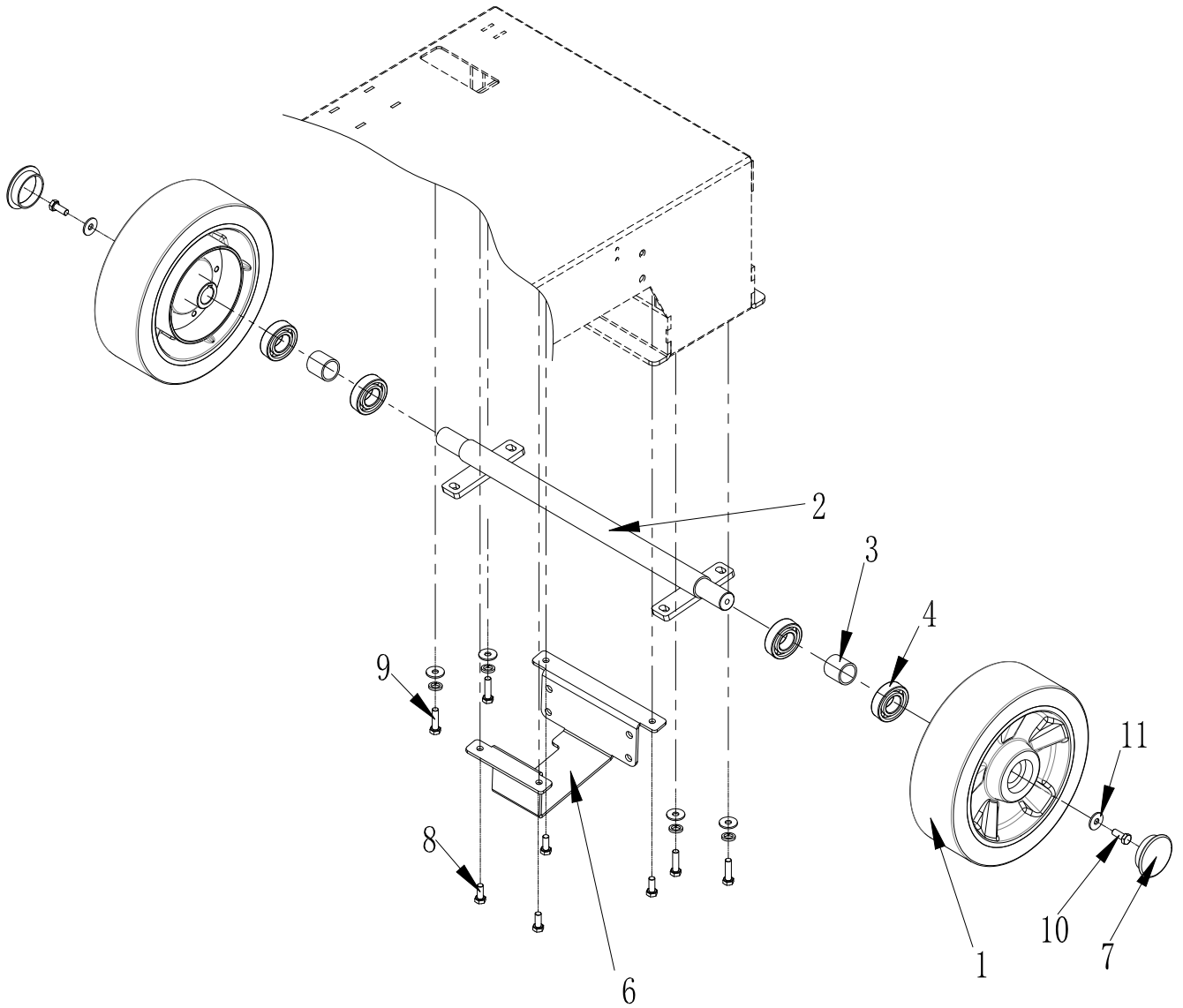
Back drive 后轮组 (后驱动型)



Back drive 后轮组（后驱动型）

序号	编 号	产 品 描 述	数 量
1	QFD100	驱动桥	1
2	FD1001902	后轮子（不带轴承）	2
3	FD1001658	驱动桥固定件	2
4	FD1001634	吸扒跨接钣金	1
5	770006	轮子防水盖	2
6	933#	M8*25 外六角螺丝	2
7		Φ32*Φ8.5*2.5-M8 垫片	2
8	933#	M8*30 外六角螺丝	4
9	5789#	M8*20 外六角组合螺丝	4

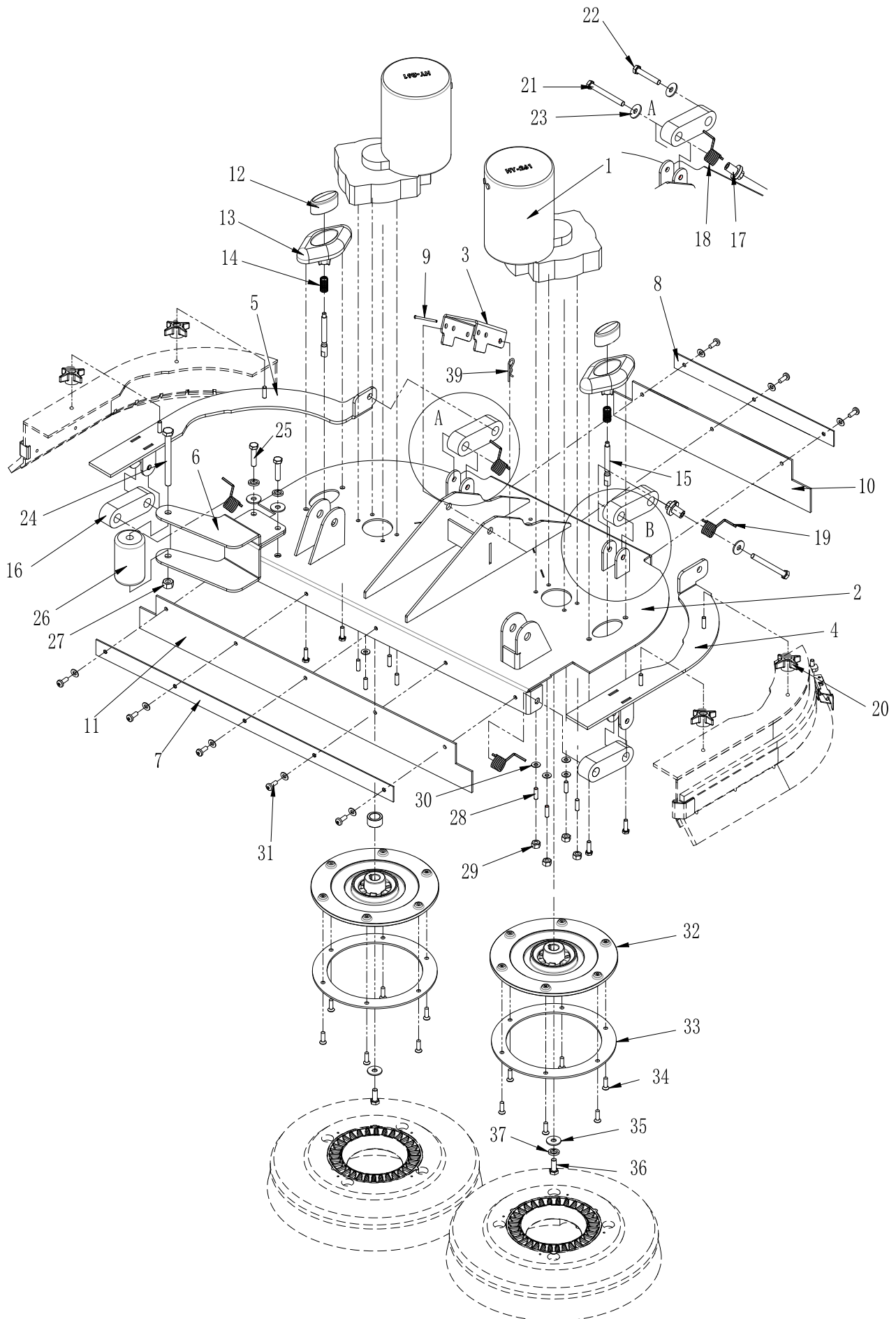
REAR WHEEL GROUP



REAR WHEEL GROUP

REF	PART	DESCRIPTION	NO
1	FD1001901	Rear wheel	2
2	FD1001622	Axle	1
3	FD1001608	Wheel axle sleeve	2
4	111	6205 axle	2
6	FD1001634	吸扒跨接钣金	1
7	770006	Wheel waterproof cover	2
8	5789#	M8*20 Hex screw	4
9	933#	M8*30 Hex screw	4
10	933#	M8*25 Hex screw	2
11		Φ32*Φ8.5*2.5-M8 Gasket	2

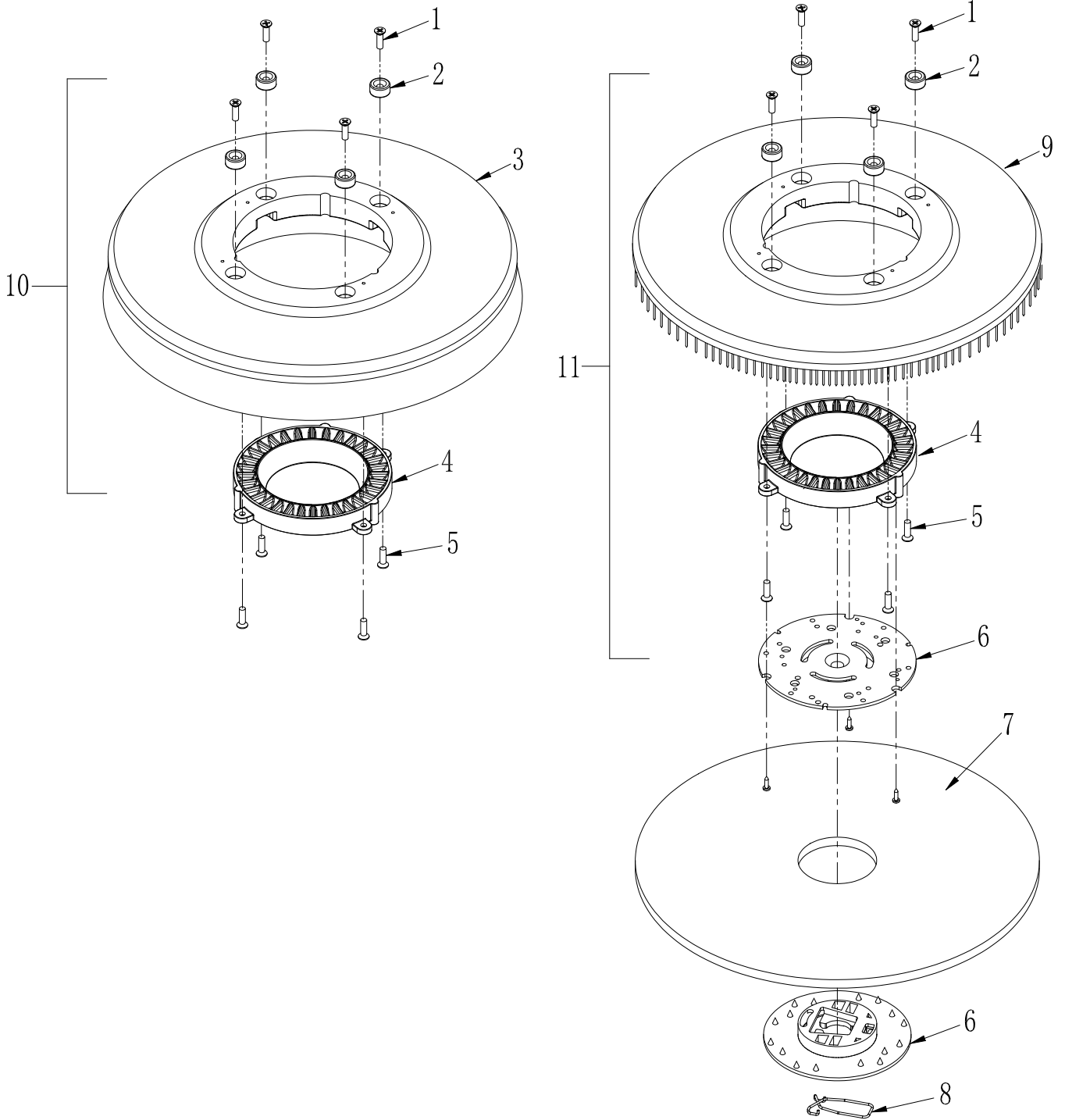
Magnetic brush system



Magnetic brush system

REF	PART	DESCRIPTION	NO
1	FD1301811	Brush motor	2
2	FD1001619	Brush cover	1
3	FD1001647	Brush lifting frame	1
4	FD1001629	左挡水盖固定件	1
5	FD1001628	右挡水盖固定件	1
6	FD1001631	Brush anticollisionframe	1
7	FD1001645	Brush cover,front blade	1
8	FD1001646	Brush cover,back blade	1
9	FD1301643	Axle,Brush lifting	1
10	FD1001711	Brush cover,back blade	1
11	FD1001710	Brush cover,front blade	1
12	270003P	Discharge brush button	2
13	FD1301739	Discharge brush button base	2
14	T15001	Discharge brush spring	2
15		Discharge spring	2
16	FD1001627	挡水边平衡杆	4
17	FD1001601	Spring knob	4
18	TFD10002	Spring	2
19	TFD10001	Spring	2
20	170018	Small knob	4
21	933#	M8*60 Hex screw	4
22	933#	M8*45 Hex screw	4
23		Φ32*Φ8.5*2.5 Gasket	4
24	933#	M8*110 Hex screw	1
25	933#	M8* Hex screw	2
26	FD1001904	anti-collision wheel	1
27	985#	M8 Stainless steel nut	5
28	77#	M6 Hex screw	8
29	985#	M6 Stainless steel lock	8
30	97#	M6 Gasket	16
31	818#	M6*16Cross round head screw	8
32	260030PS	Brush driver	2
33	260036PS	Brush driver accessories	2
34	819#	M5*12Cross head screw	12
35		Φ27*Φ6.5*3.0 Gasket	2
36	933#	M6*30 Hex screw	2
37	93#	M6 Spring gasket	2

MAGNETIC BRUSH GROUP

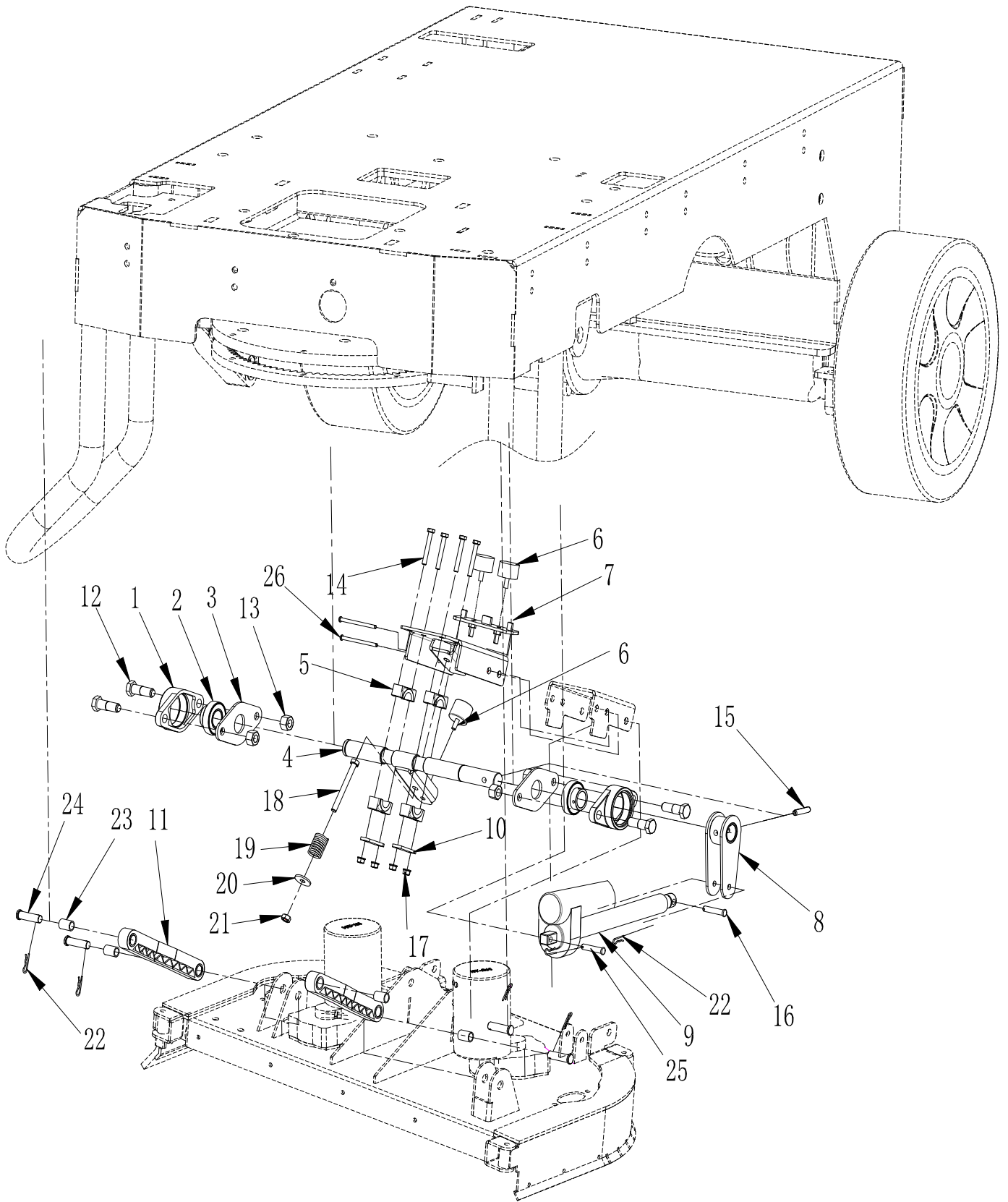


MAGNETIC BRUSH GROUP

REF	PART	DESCRIPTION	NO
1	846#	Φ6.3*25Cross head screw	4
2	FD1301664 (大)	Strong magnetic	4
3	S50117CL	Brush	1
4	F501714	Brush drive	1
5	846#	Φ4.5*16Cross screw	4
6	S50104	Centring device	1
7		Cleaning pad	1
8	T15010	Centring device	1
9	S50116CL	Pad holder	1
10		Magnetic brush group	1
11		Magnetic pad holder group	1

]

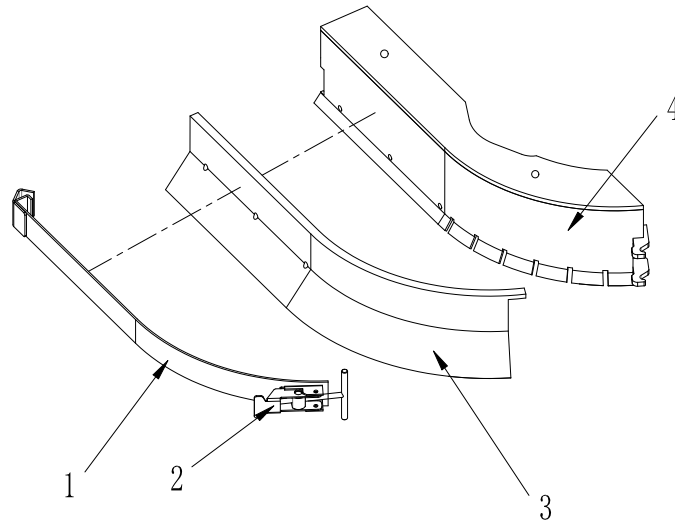
Lifting brush group



Lifting brush group

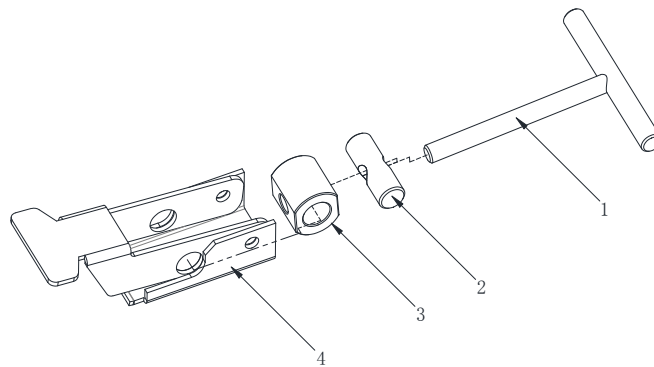
REF	PART	DESCRIPTION	NO
1	130	UCFL205	2
2			
3	FD1001650	205 Bear sleeve plate	2
4	FD1001616	Axle, lifting brush	1
5	FD1301721	Fix axle lifting brush	4
6	SD190005	Rubber cushion 40*25	1
7	FD1001624	Limit, brush lifting	1
8	FD1001603	Bush main lifting	1
9	FD1001801	Brush push rod	1
10	FD1301641	Axle, brush lifting plate	2
11	570020	Handle, Lifting Arm	2
12	933#	M16*45 Hex screw	4
13	934#	M16 Nut	4
14	912#	M8*70 Hex screw	4
15	912#	M12 Hex screw	2
16	FD1001664	Φ8*40 pin	1
17	985#	M8 Stainless Steel Nylon Nut	4
18	931#	M10*110 Hex bolt	1
19	TS0006	Spring, brush lifting axle	2
20	PD96#	Φ10*Φ30*2.5-M10 gasket	1
21	985#	M10 Stainless nut	2
22	190019	Pin, spring	6
23	FM005	Φ18*Φ14 POWDER METALLURGY	4
24	190023	Pin	4
25	FD1001664	Φ8*40 Pin axle	1
26	FD1301642	Fix pin, brush lifting	2

LEFT WATER FENDER GROUP



LEFT WATER FENDER GROUP

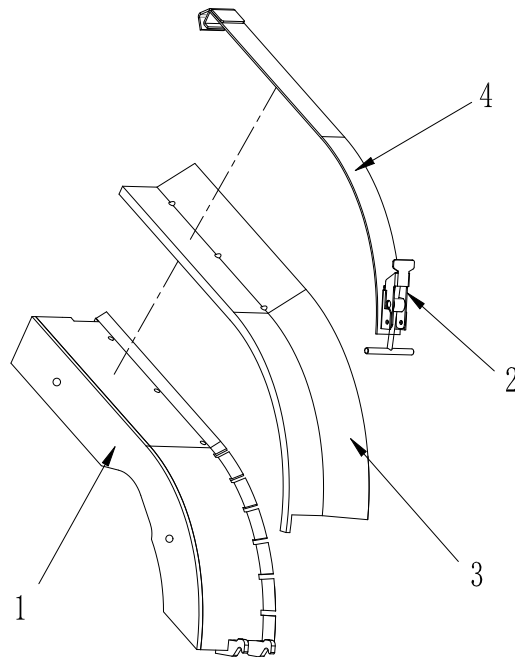
REF	PART	DESCRIPTION	NO
1	FD1001643	Left,Stainless steel batten	1
2		Pin	1
3	FD1001708	Blade plate,Right	1
4	FD1001633	Side cover holder right	1



PIN ASSY

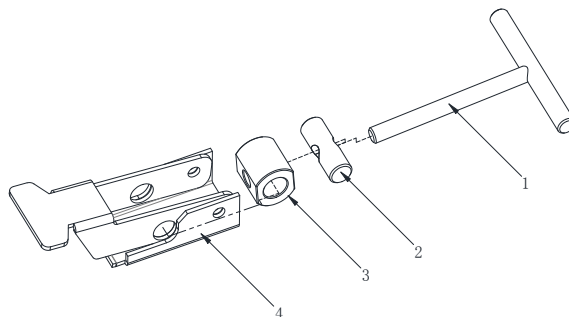
1	FD1301665	TSCREW	2
2	XDT206013	PIN	2
3	XDT206009	Axle sleeve	2
4	FD1301611	压条搭扣 (焊接用)	2

LEFT WATER FENDER GROUP



LEFT WATER FENDER GROUP

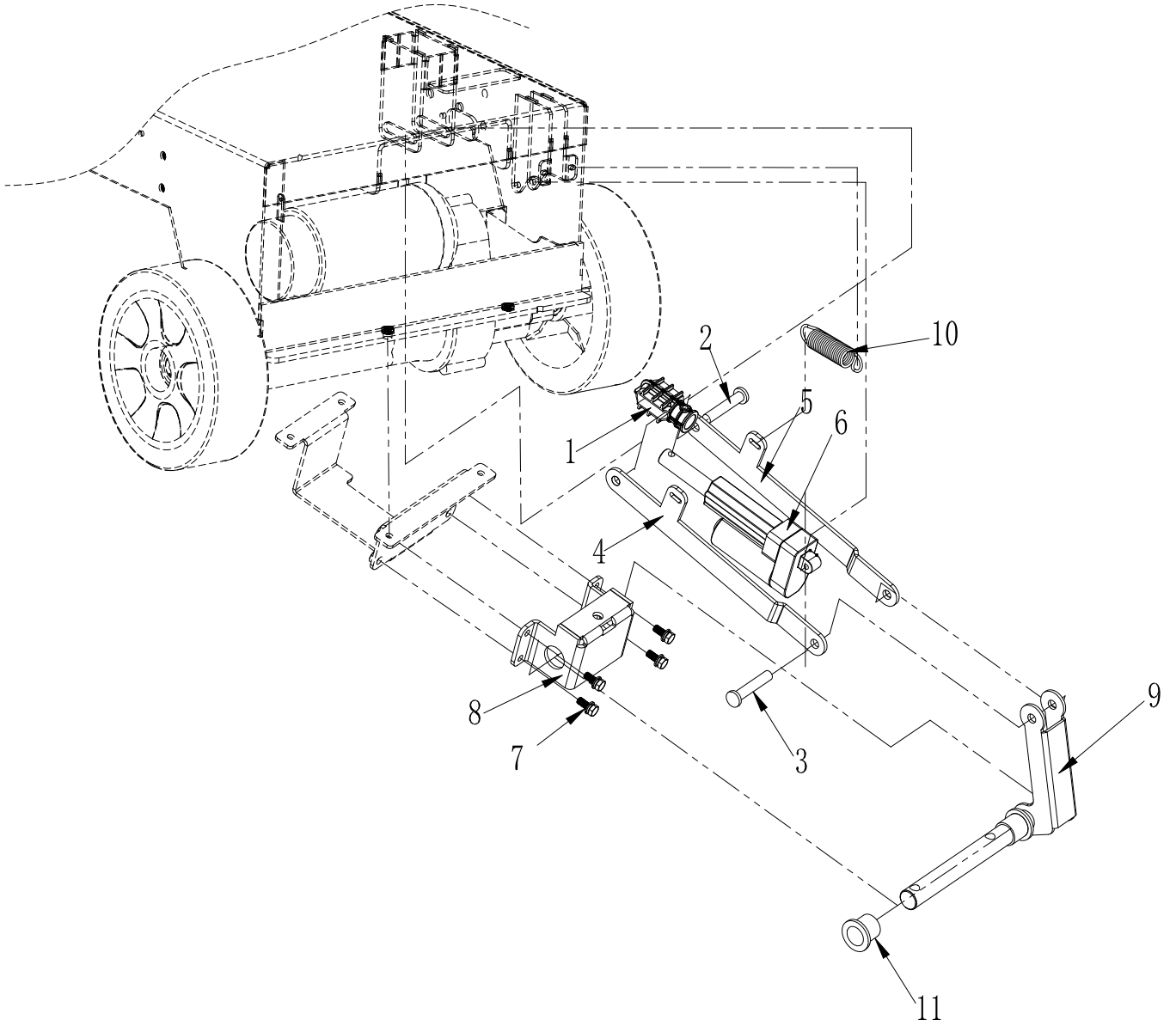
REF	PART	DESCRIPTION	NO
1	FD1001632	Side cover holder left	1
2		搭扣组件 (详见如下)	1
3	FD1001709	Blade plate,Left	1
4	FD1001644	Stainless steel batten	1
5			
6			



pin

1	FD1301665	Tscrew	2
2	XDT206013	PIN	2
3	XDT206009	Axle sleeve	2
4	FD1301611	压条搭扣 (焊接用)	2

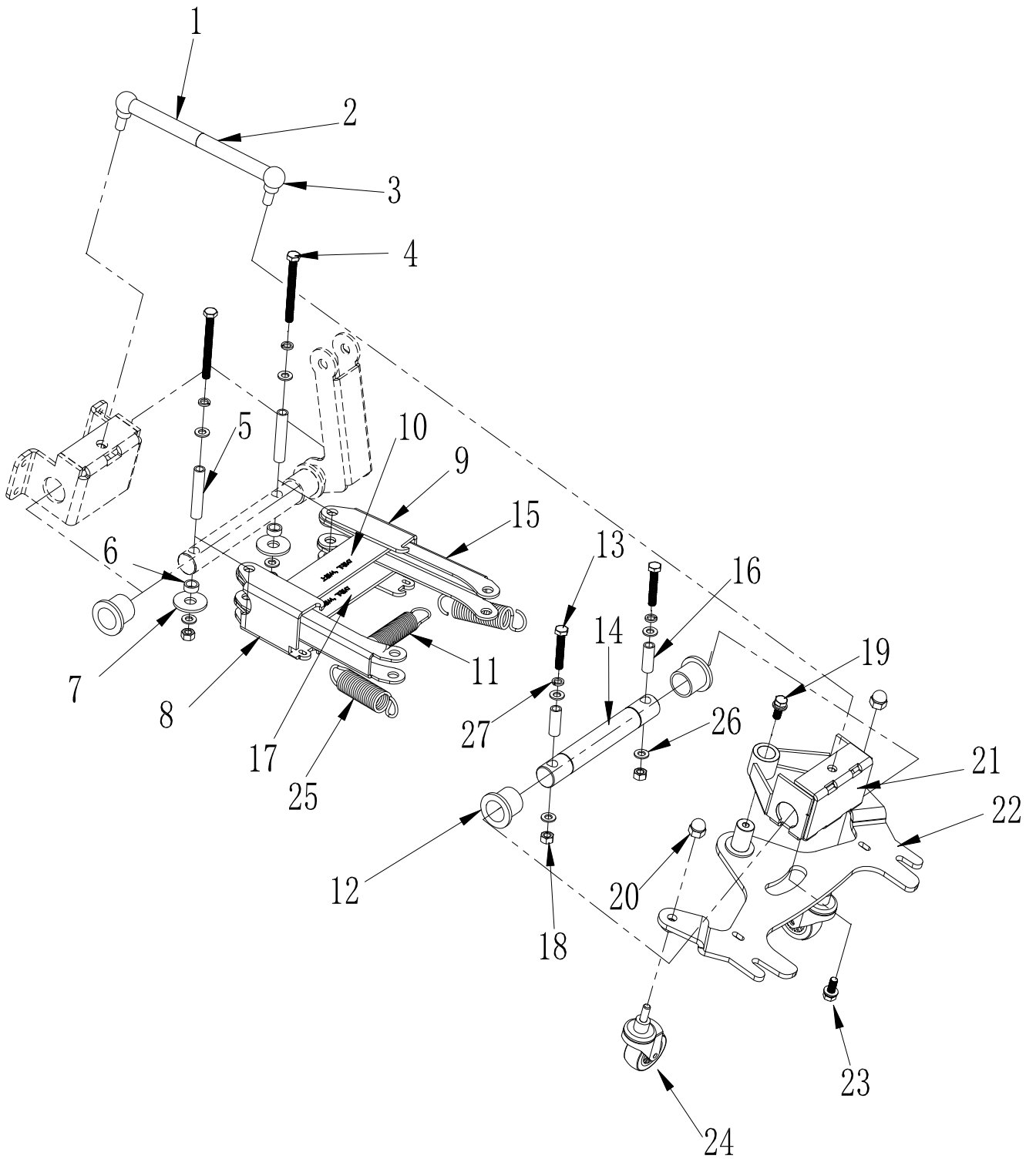
Squeegee pull rod group



Squeegee pull rod group

REF	PART	DESCRIPTION	NO
1	FD1301706	Fix,Squeegee pull rod	1
2	FD1001613	Φ12*80 Pin	1
3	FD1001610	Φ12*70 pin	1
4	FD1001635	Left,Squeegee lifting connect	1
5	FD1001636	Right,Squeegee lifting connect	1
6	FD1001802	Squeegee liftingpull rod	1
7	5789#	M8*20 Hex screw	4
8	FD1001637	Squeegee lifting seat	1
9	FD1001617	吸扒升降转动轴	1
10	T180002	Spring	2
11	FD1001707	Squeegee axle sleeve	2

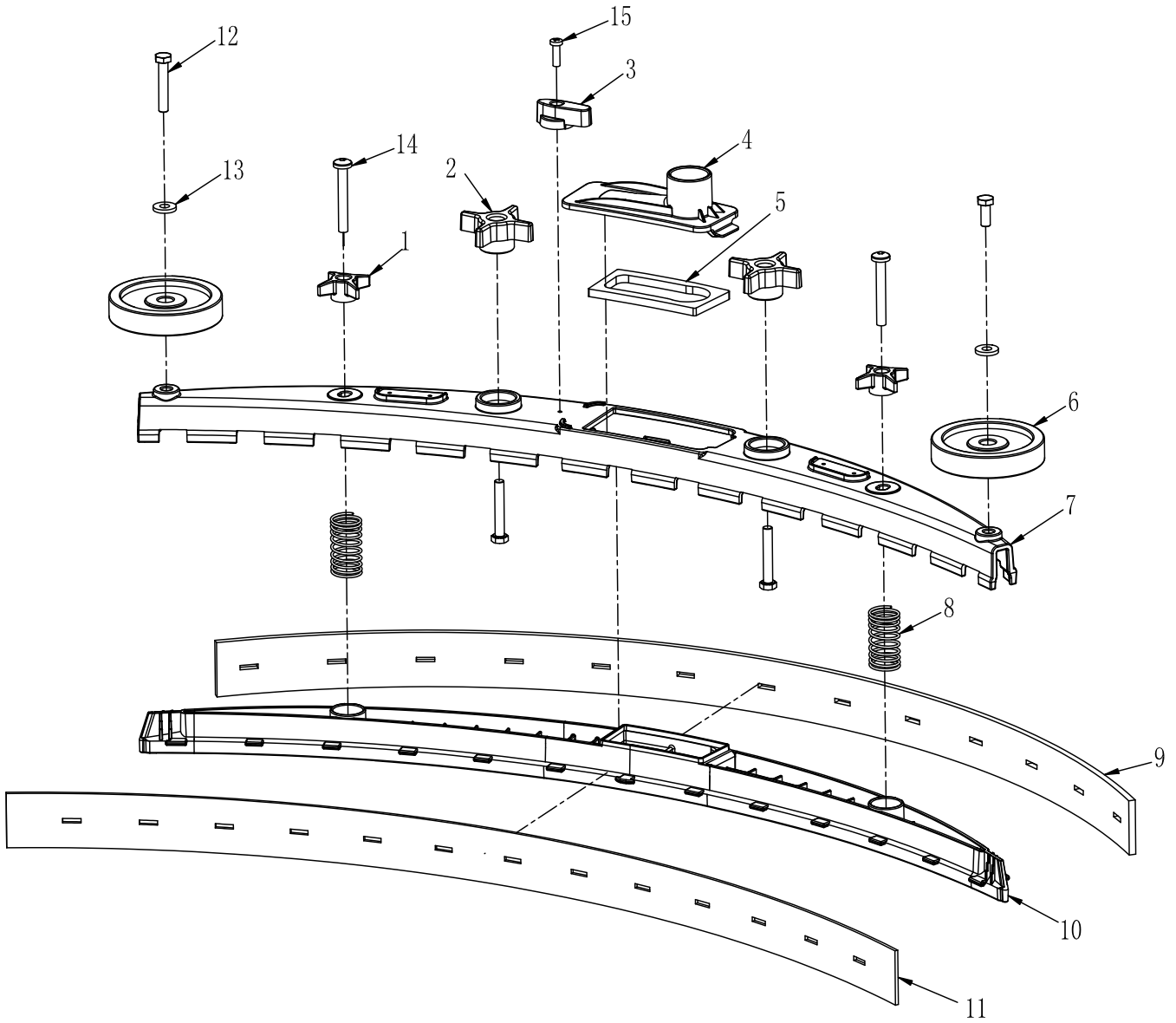
Squeegee lifting group



Squeegee lifitng group

REF	PART	DESCRIPTION	NO
1	FD1001612	Squeegee adjust screw	1
2	FD1001605	Squeegee pole	1
3	FD1301625	M10 Ball Join	2
4	933#	M8*80 Hex screw	2
5	FD1001606	Axle sleeve	2
6		Φ12*Φ16*5.5 POWDER METALLURGY	2
7		Φ30*Φ12.5*2.5	2
8	FD1001639	Left,Limit plate	1
9	FD1001640	Right,Limit plate	1
10	FD1001641	Lifting plate	1
11	T180002	Spring	1
12	FD1001707	Nylon sleeve	2
13	933#	M8*45 Hex screw	2
14	FD1001618	Axle	1
15	FD1001638	吸扒升降钣金	2
16	FD1001607	Axle sleeve	2
17	FD1001642	升降夹板下	1
18	985#	M8 Nut	4
19	5789#	M8*20 Hex screw	1
20	1587#	M10 Nut	2
21	FD1001611	吸扒升降旋转座	1
22	FD1001621	Squeegee bracket	1
23	933#	M8*8 Hex screw	1
24		万向轮	2
25	T13006	Squeegee spring	2
26		Φ22*Φ8.5*2.0	4
27	93#	M8spring gasket	6

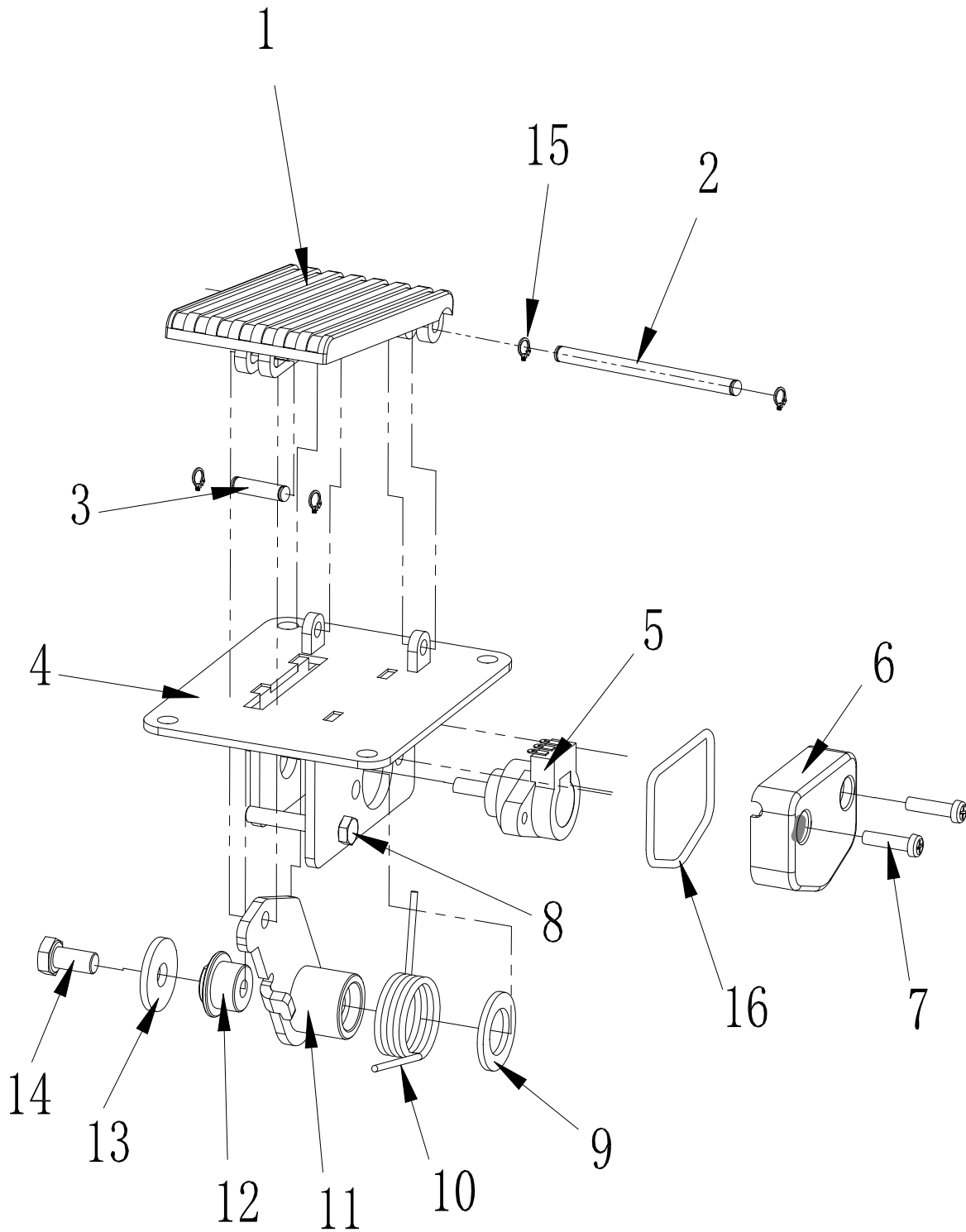
Squeegee group



SQUEEGEE GROUP

REF	PART	DESCRIPTION	NO
1	170018	Knob, Star, Small	2
2	170017	Knob, Star, Big	2
3	FD1301702	Knob, Star, Small	1
4	270004PX	SQGE mouth	1
5	290004P	SQGE mouth sponge	1
6	190015	Wheel , Fender	2
7	FD1301650	Frame,squeegee	1
8	T12006	Bracket, Blade, Spring	2
9	FD1301727	Squeegee ,back	1
10	FD1301708	Bracket, Sqge	1
11	FD1301726	Squeegee ,front	1
12	933#	M8*30 Hex screw	2
13	PD0008	Φ8*22 Gasket	2
14	LS 盘头内六角孔螺丝	M8*60 screw	2
15	912#	M6*20 hex screw	1

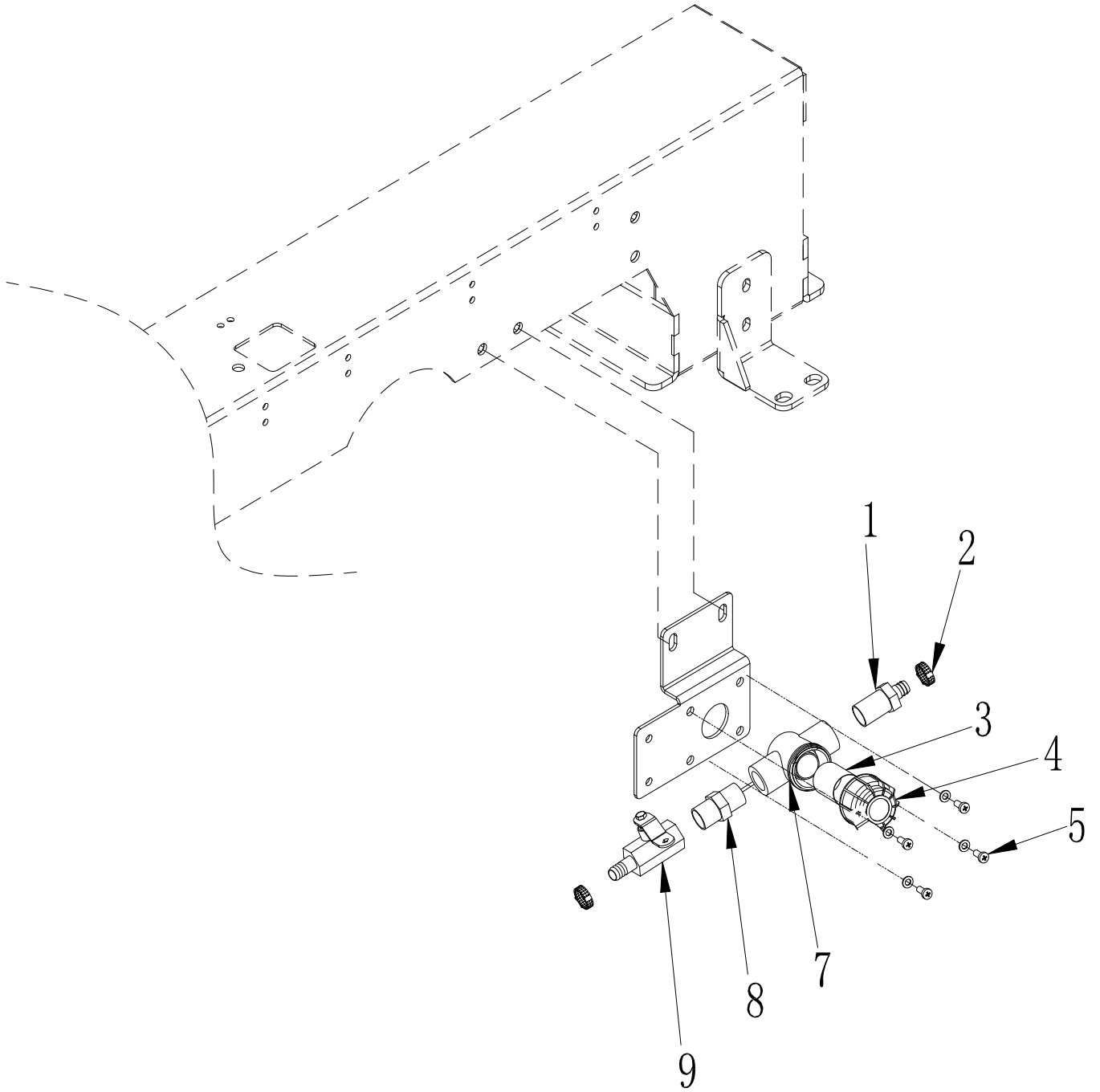
ACCELERATOR GROUP



ACCELERATOR GROUP

REF	PART	DESCRIPTION	NO
1	770070B	Pedal	1
2	760069	Φ6 Axle	1
3	760070	Φ6 Axle	1
4	760068	Pedal plate	1
5	680014	Accelerator potentiometer	1
6	770072	Accelettor poteniometer cover	1
7	818#	M5*25 Cross screw	2
8	933#	M6*40 cross screw	1
9		Nylon gasket	1
10	T15013	Spring	1
11	760066	加速器摇臂	1
12	760067	Accelerator axle	1
13	760039	Nylon gasket	1
14	933#	M8*16 Hex screw	1
15		Φ6 轴卡	4
16	790015	Gasket	1

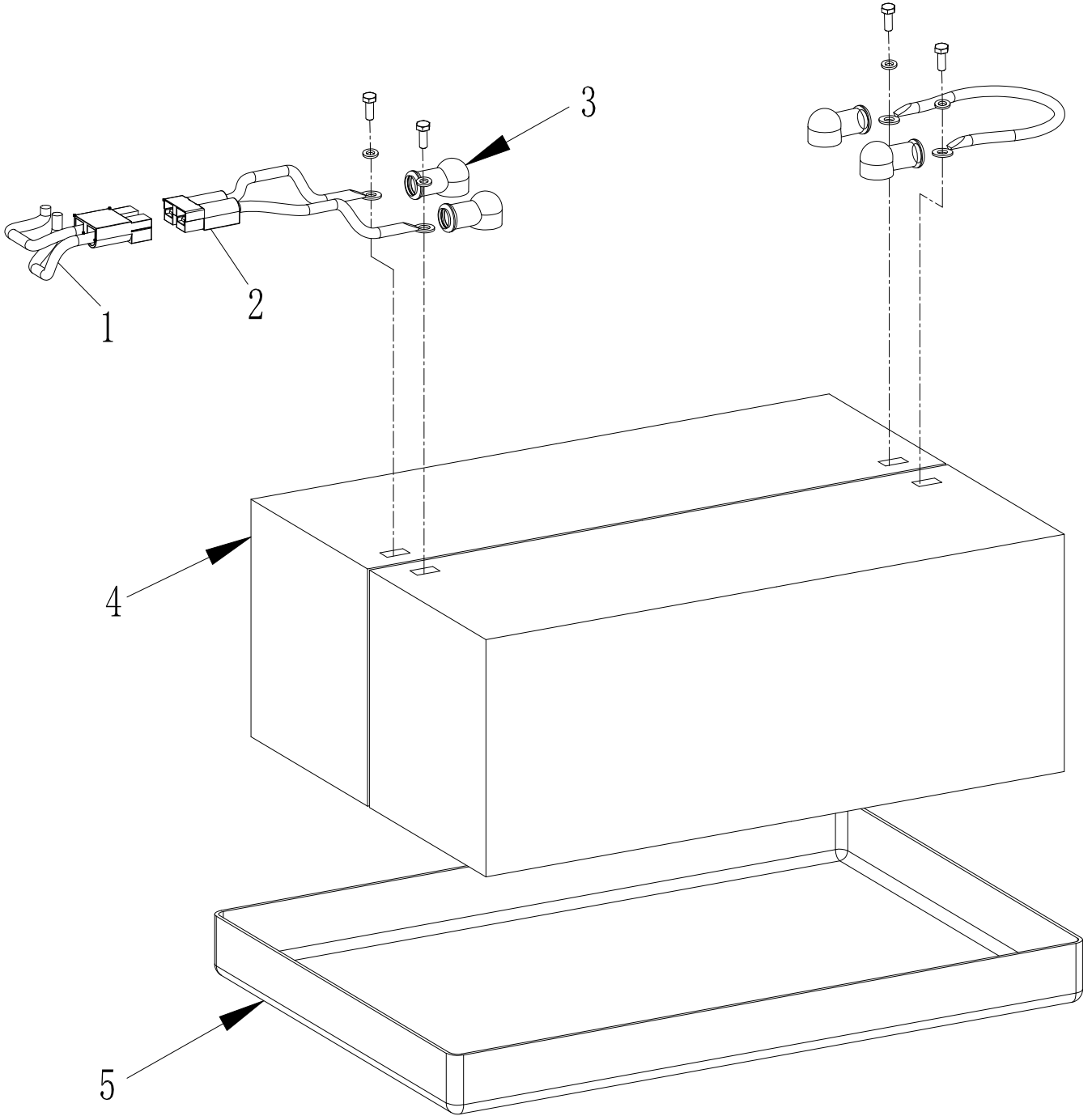
FILTER GROUP



FILTER GROUP

REF	CODE	DESCRIPTION	QTY
1	370033	CONACT	1
2	190004	CLIP	1
3	690014	FILTER SCREEN	1
4	690016	Filter cover	1
5	818#	Screw M5x16	4
	97#	Flat washer M5	4
7	690015	Filter body	1
8	670044	Connector	1
9	260026P	Water valve	1

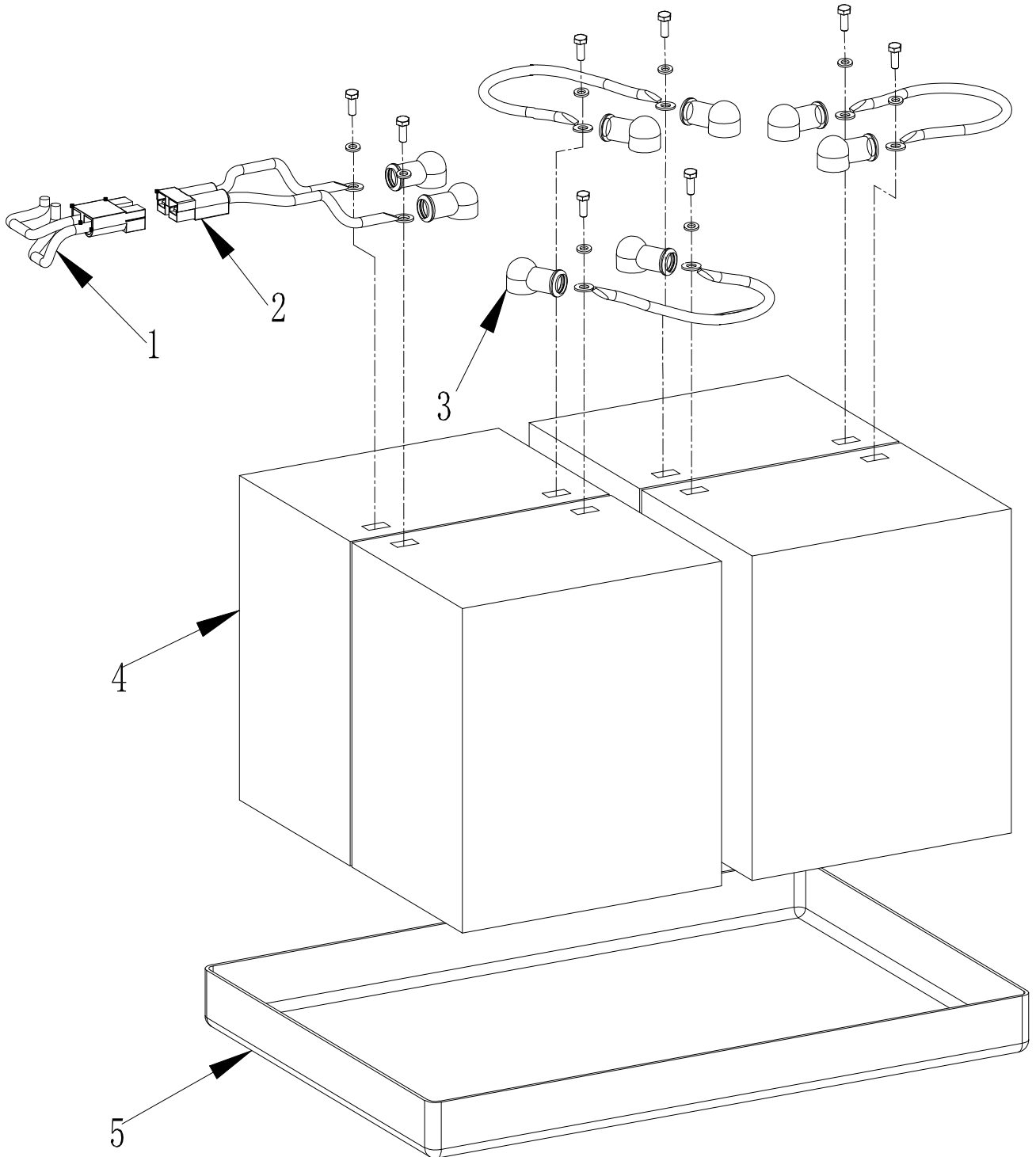
电池组(标配)



电池组(标配)

序号	编 号	产 品 描 述	数 量
1		整机线束	1
2	180030	充电器大插头	1
3	170018 (1)	阻燃护套	4
4	690040	电瓶	2
5	FD1301723	电瓶托盘	1

BATTERY GROUP



BATTERY GROUP

REF	PART	DESCRIPTION	QTY
1		Main battery connecting line	1
2	180030	Charger plug	1
3	170018 (1)	Harness, Battery	8
4	590040	Battery	4
5	FD1301723	Tray, Battery	1

洁净空间 我来创造

绿色生活 与你共享